



# HOLLYWOOD WATERWAYS MASTER PLAN

MAY 14, 2014







# **HOLLYWOOD WATERWAYS MASTER PLAN DRAFT**

**MAY 14, 2014**





## **AGENDA**

### **INTRODUCTION**

### **MASTER PLAN**

### **CITY WIDE INFRASTRUCTURE PROJECTS**

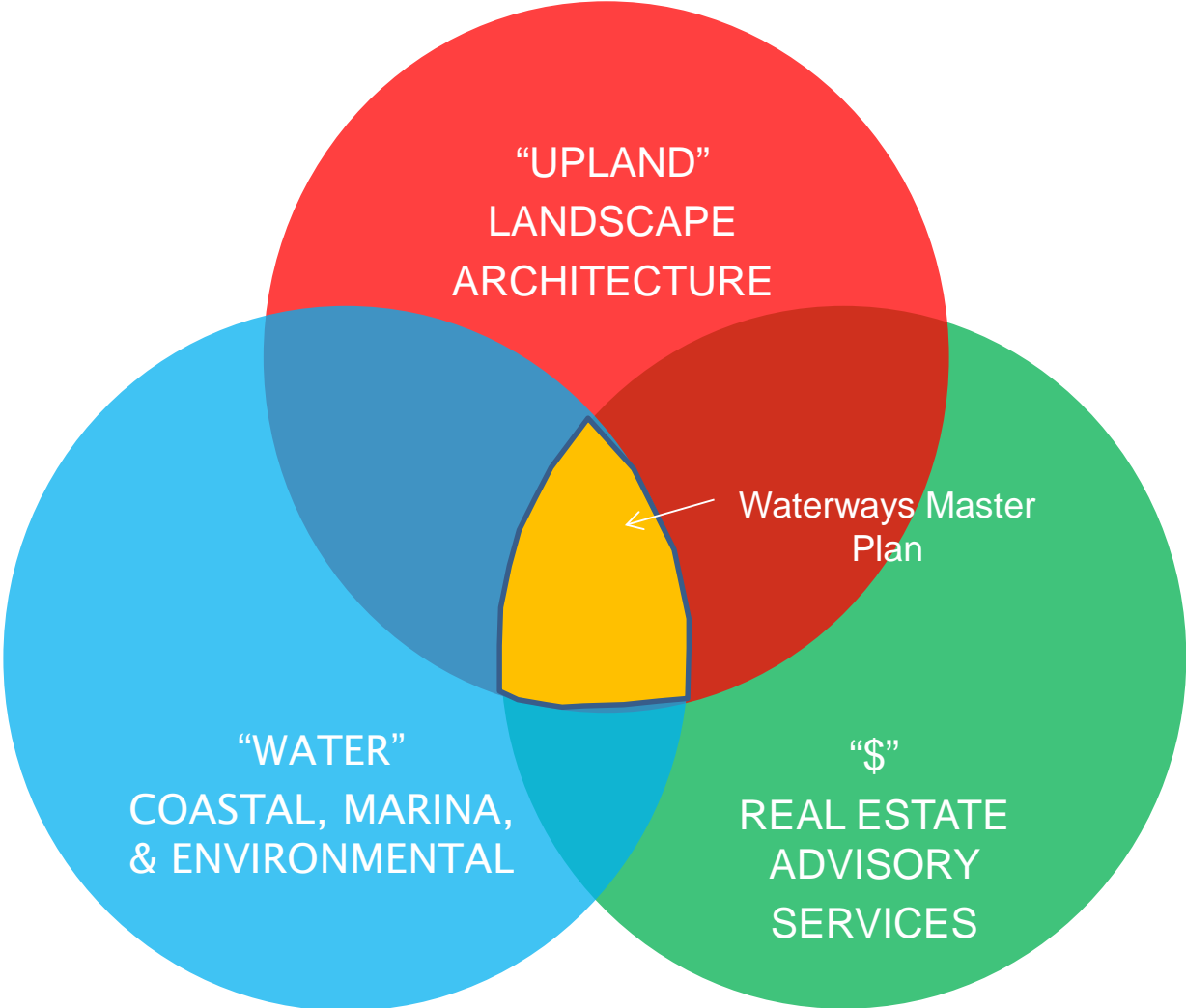
#### **SPECIFIC PROJECTS:**

- A. Residential Lakes-Neighborhood Paths**
- B. Residential Lakes- Dredging Strategy**
- C. Residential Lakes- North Lake Improvements**
- D. Holland Park Improvements**
- E. Intracoastal Waterway-Docking and Mooring Coves**
- F. Barrier Island-Street Improvements and ICW Connectivity**
- G. Barrier Island- Day Docking and Beach Accessibility**
- H. Anne Kolb- Recreation and Eco Tourism**
- I. Rotary Park**

### **QUESTIONS AND COMMENTS**



# TEAM & AREAS OF STUDY FOCUS



Planning and Landscape  
Architecture



Coastal, Marina and  
Environmental Engineering



Real Estate Advisory  
Services

The Hollywood Waterways Master Plan team has outlined a preliminary series of projects which include both, on-water and upland initiatives. This priority list has been compiled through a combination of the team’s inventory and analysis process, input from the City officials and staff, and public outreach. The identified projects are categorized by physical/geographic area, and each is assigned a priority, time frame, and partnering requirements. An important focus of the Waterways Master Plan is to bring forth projects that can have an immediate benefit, and to ultimately develop a project program that is achievable in terms of design, permitting, and funding.

Based on observations by the planning team and validated by city staff and residents, broad improvements to water-related infrastructure, both in-water and land-side in the City are desired and justified. In general, the following subjects can be applied city-wide to nearly all waterway frontage and are further described within specific project recommendations.





# IMPROVING QUALITY OF LIFE

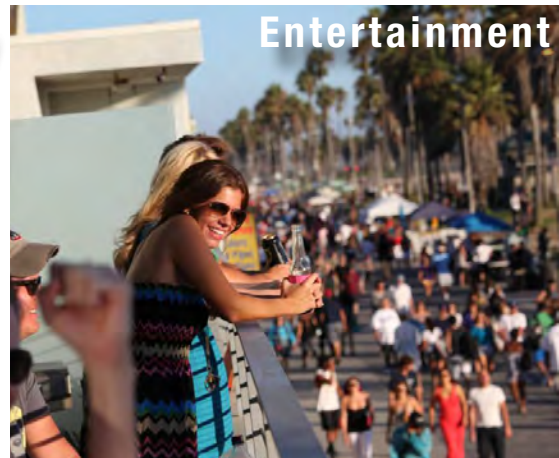
Access To Natural Amenities



Community



Entertainment



Recreation

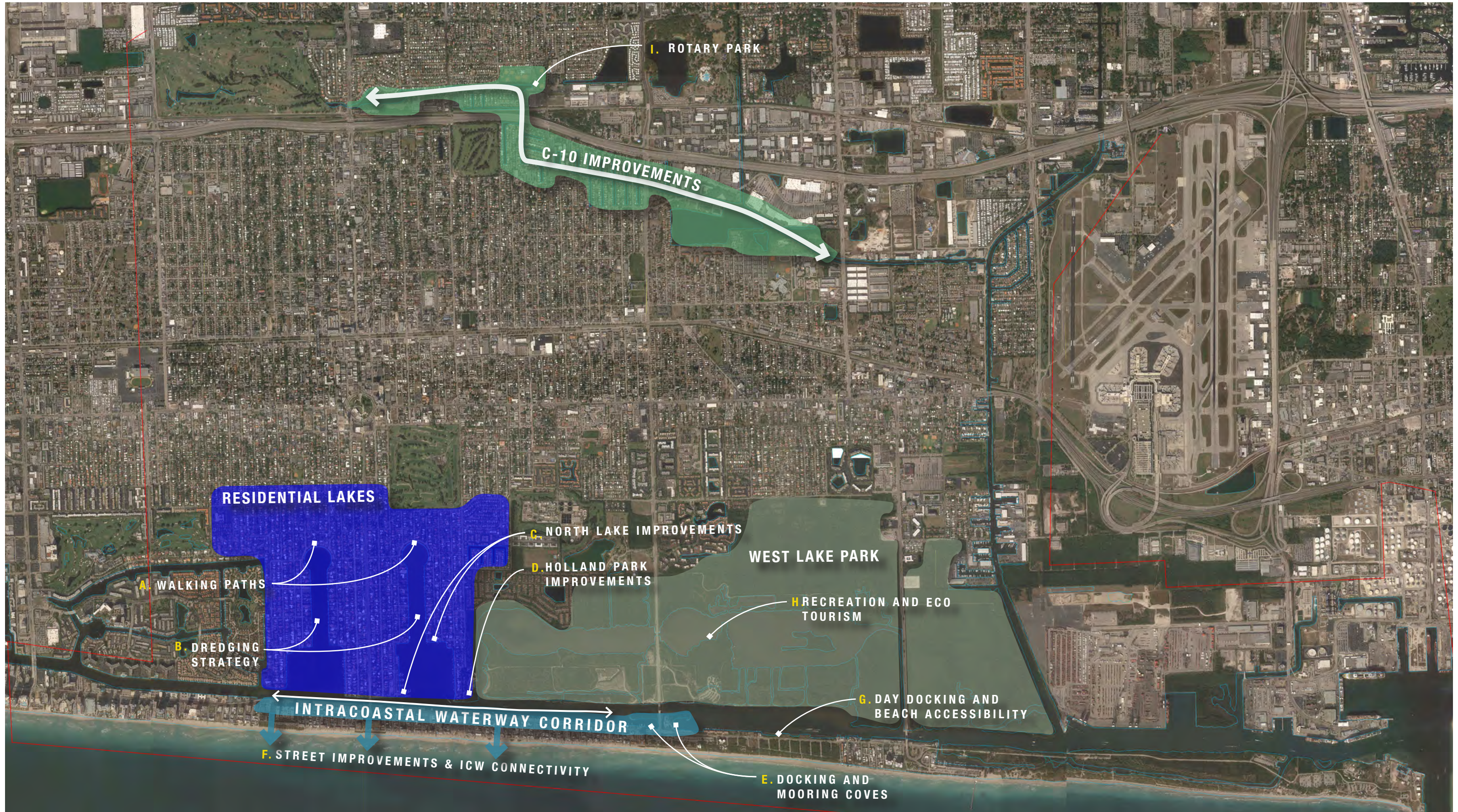


## Initial Analysis Based Goals:

- Enhance waterway environs for residential use
- Recognize and enhance the city's water resources to measure their unique value to the community
- Link beach to ICW
- Guide sensitive redevelopment of intracoastal frontage
- Expand maritime offerings
- Protect and enhance environmental resources
- This plan will assist in identifying potential projects for future grants as well as provide leverage for CRA funding.









# IMPROVE STORM DRAINAGE/FLOOD CONTROL/POLLUTION CONTROL

**Description:** City-Wide, the lakes and waterways present several environmental issues dealing mainly with the storm water run-off and flooding. The following recommendations will help to reduce the flooding within the neighborhoods and surrounding waterways.

- 1. The City should install/implement back-flow preventers on outfalls to control the water entering at higher tides.
- 2. Explore the use of sand traps and filter stations at the outfalls along the waterways to eliminate the silt and toxic pollutants entering the water though storm water run-off. The silt from the run-off creates an unsuitable substrate for the propagation of seagrasses and brings with it pollutants which accumulate to unsafe levels due to poor flushing. Pump stations at the marina (as mentioned above) and golf courses should be carefully designed to include these improvements.

**Justification:** Reduce the amount of residential flooding, hazard to traffic (flooding). Reduces the need for future dredging, removes contaminants associated with storm water run-off (sand trap).

**Works:** Install/implement the use of sand traps or other filtration systems to collect the sediments before entering the lakes. Installation of back-flow preventers.

**Related Works:** Upland landscaping, etc.

**Management:** Control operation regulations and control, City of Hollywood, SFWMD.

**Cost/Funding:** Intermediate, additional funding research required.

**City Decision-Making Control:** High (Permitting and Construction on City-Owned properties).

**Complexity:** Intermediate

**Importance:** Intermediate

**Priority:** Low before proposed dredging, intermediate to high after proposed dredging is pursued.





# SEAWALLS

**Recommendations:** A comprehensive seawall survey/assessment is recommended to assess and develop mechanisms to improve/repair all City owned seawalls as needed. Where seawalls are found to be failing, improvements made should take into account sea level rise and be constructed to a suitable elevation.

**Justification:** Prevention of flooding, protect adjacent seawalls.

**Works:** There are many solutions to damaged seawalls and the costs vary by need and site.

**Related works:** Upland public access, waterfront park, landscaping, etc., depending on the site.

**Management:** Operation regulations and control, City of Hollywood.

**Cost / funding:** Intermediate/high. FIND funding may be available. Consider 50/50 split of expenses between residents and City for residential seawall ownership areas - tax zone assessment may be necessary. Seawalls within City ownership to be directly funded by City/potential grants.

**City decision-making control:** High/intermediate depending on permitting.

**Complexity:** Intermediate

**Importance:** Intermediate

**Priority:** Intermediate





# ADDITIONAL WATERWAY IMPROVEMENTS (BRIDGE GATEWAYS)

**Description:** City identification elements on drawbridges.

**Justification:** Expand awareness and signature for the City of Hollywood.

**Works:** Applied graphics or painted identification elements to draw spans and/or piers.

**Related Works:** Overall City marketing strategy.

**Management:** City public works in coordination with FDOT and ACOE.

**Cost / Funding:** City’s cost, potential to be a public art project.

**City Decision-Making Control:** Intermediate to low- subject to outside permitting entities with rigid standards.

**Complexity:** Intermediate

**Importance:** Intermediate

**Priority:** Intermediate

# ADDITIONAL WATERWAY IMPROVEMENTS (WATER TAXI)

**Description:** Additional water taxi stops at Anne Kolb Nature Center and Margaritaville.

**Justification:** Improved waterway circulation along ICW.

**Complexity:** Low

**Importance:** Intermediate

**Priority:** Intermediate

## BRIDGE GATEWAYS



## WATER TAXI







## LOCATION SPECIFIC PROJECTS

- A. RESIDENTIAL LAKES-NEIGHBORHOOD PATHS
- B. RESIDENTIAL LAKES- DREDGING STRATEGY
- C. RESIDENTIAL LAKES- NORTH LAKE IMPROVEMENTS
- D. HOLLAND PARK IMPROVEMENTS
- E. INTRACOASTAL WATERWAY-DOCKING AND MOORING COVES
- F. BARRIER ISLAND-STREET IMPROVEMENTS AND ICW CONNECTIVITY
- G. BARRIER ISLAND- DAY DOCKING AND BEACH CONNECTIVITY
- H. ANNE KOLB-RECREATION AND ECO TOURISM
- I. ROTARY PARK





RESIDENTIAL LAKES: OPTION A

**Description:** Linear parks at West ends of North and South Lake, with options of expressing a range of features.

**Justification:** To increase visual and physical access to the water and improve the visual quality of these unique lake edges

**Works:** Option A includes landside improvements with meandering paths, benches, road intersection treatment, pedestrian level lighting, and enhanced landscape.

**Related Works:** Reconstruct storm water outfalls to incorporate pollution control devices and backflow preventers.

**Management:** City public works/parks and recreation.

**Cost / Funding:** Low to intermediate cost. Potential FIND grant funding as the planned improvements increase public access to the water.

**City Decision-Making Control:** High

**Complexity:** Low to intermediate

**Importance:** High

**Priority:** Intermediate to high. This option is a relatively simple project as it does not involve permitting of over-water structures.



A. RESIDENTIAL LAKES-NEIGHBORHOOD PATHS

05.14.2014



RESIDENTIAL LAKES: OPTION B

**Description:** Option B adds a walkable overlook structure to Option A, allowing users to gain closer proximity to the water.

**Justification:** Further increased ability of neighborhood users to approach the water.

**Works:** Composite wood/concrete structures spanning the seawall.

**Related Works:** Seawall survey to assess conditions of existing edge. If seawall replacement is recommended there is potential to combine projects.

**Management:** City public works, parks and recreation.

**Cost / Funding:** City funding with opportunity for FIND Grant

**City Decision-Making Control:** intermediate-possibly subject to ACOE And SFWMD.

**Complexity:** Intermediate to high, depending on condition of existing seawall.

**Importance:** Intermediate

**Priority:** Overall project-high. Option B-intermediate.



A . RESIDENTIAL LAKES-NEIGHBORHOOD PATHS

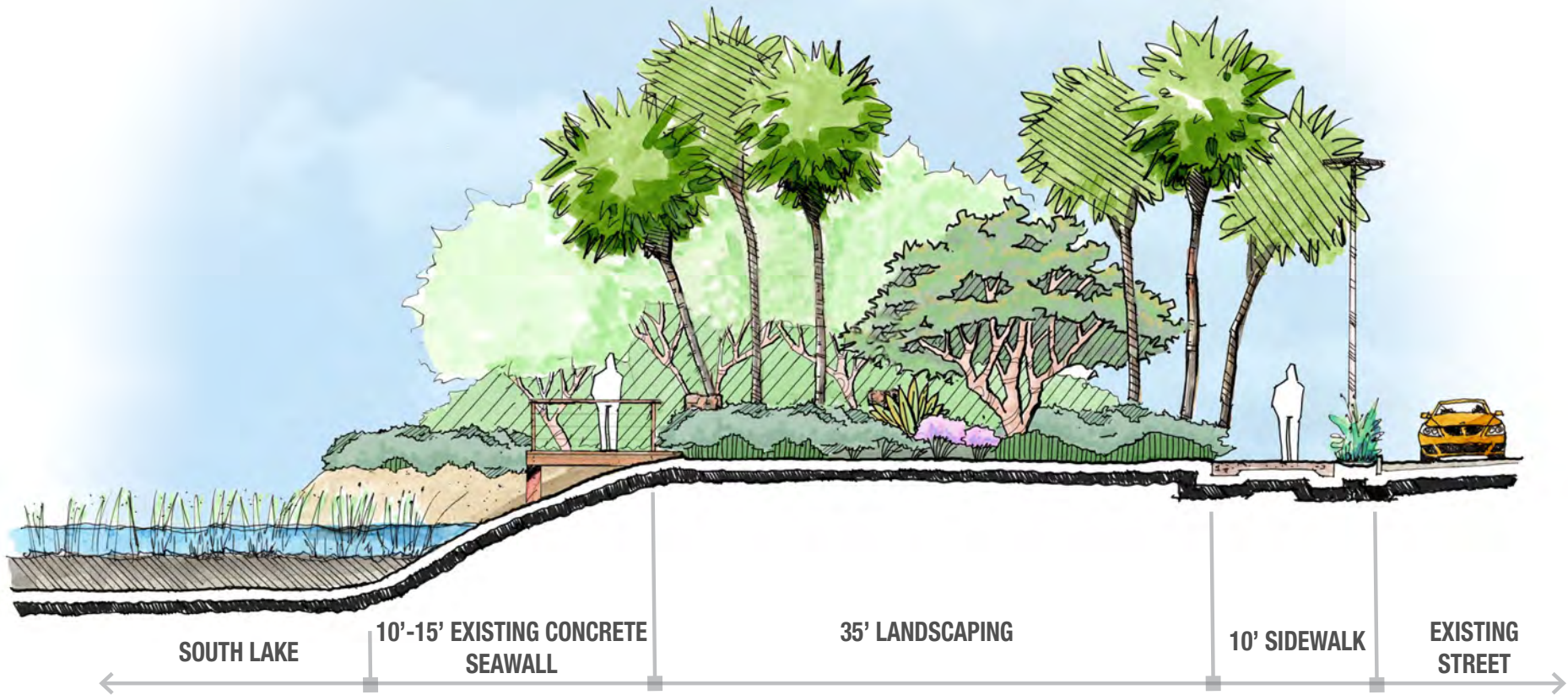
05.14.2014



SAFETY: LIGHTING AND HIGH VISIBILITY



SOUTH LAKE SECTION





DREDGING STRATEGY:

Description: Dredge residential channel near shoreline.

Justification: Preserve and enhance the ability to dock boats along residential seawalls.

Works: Dredging and associated permit/implementation strategy.

Related works: Disposition of dredged fill, potential mitigation, potential aquatic planting to cleanse storm water and mitigate wave action.

Management: City engineering in cooperation with ACOE.

Cost / Funding: High cost, potential to share between City and homeowners by way of assessments (permitting and construction on city-owned properties).

City Decision-Making Control: Intermediate-subject to ACOE.

Complexity: Intermediate

Importance: Intermediate

Priority: Intermediate



B. RESIDENTIAL LAKES-DREDGING STRATEGY

05.14.2014





NORTH LAKE MARINE IMPROVEMENTS

**Description:** Navigation improvements to North Lake, including: dredging of shoals, modernization of City Marina, sea level rise adaptation, run-off control improvements and potential environmental restoration.

**Justification:** Strong viable and sustainable plan for boating infrastructure, valuable City asset, marina modernization may support other improvements, resident’s request for dredging, resident’s request for trailer traffic reduction, flooding problems during high tide, uncontrolled run-off discharges, FEMA remapping and insurance cost increases, etc.

- Works:** multiple related improvements:
- Marina Redevelopment (similar slip count, larger vessels, similar footprint, modern standards)
  - Lake Dredging (zoning for marina access / sailing school / residential docks access)
  - Stormwater Discharge Improvements (possibly seaward of seawall)
  - Sailing School Improvements
  - Shoreline Improvements with Habitat Restoration (may be used to address seawall maintenance problems)

**Related Works:** Upland waterfront park / landscaping, signage to redirect trailer traffic through Hollywood Blvd., etc. Environmental mitigation and design elements may affect permitting and cost.

**Management:** Marina and trailer parking regulations and control through City Marina manager.

**Cost / Funding:** High cost. FIND and Broward Co. Improvement funding available for public use boating infrastructure (marina docks and dredging) City CIP.

**City Decision-Making Control:** High (permitting and construction on City-owned properties)

**Complexity:** High -close coordination with residents and existing clubs, potential high cost and permitting challenges may require innovative approaches (SEPA)

**Importance:** High

**Priority:** Intermediate

OPTION A.



C. RESIDENTIAL LAKES-NORTH LAKE IMPROVEMENTS

05.14.2014





NORTH LAKE MARINE IMPROVEMENTS

**Description:** Navigation improvements to North Lake, including: dredging of shoals, modernization and extention of docks for the City Marina, sea level rise adaptation, run-off control improvements and potential environmental restoration.

**Justification:** Strong viable and sustainable plan for boating infrastructure, valuable City asset, marina modernization may support other improvements, resident’s request for dredging, resident’s request for trailer traffic reduction, flooding problems during high tide, uncontrolled run-off discharges, FEMA remapping and insurance cost increases, etc.

**Additional Works to Option A:**  
• Marina Dock Extension (increase slip count, larger vessels, larger footprint, modern standards)

**Related Works:** Upland waterfront park / landscaping, signage to redirect trailer traffic through Hollywood Blvd., etc. Environmental mitigation and design elements may affect permitting and cost.

**Management:** Marina and trailer parking regulations and control through City Marina manager.

**Cost / Funding:** High cost. FIND and Broward Co. Improvement funding available for public use boating infrastructure (marina docks and dredging) City CIP.

**City Decision-Making Control:** Intermediate, outside entities involved in permitting (Army Corp of Engineers)

**Complexity:** High -close coordination with residents and existing clubs, potential high cost and permitting challenges may require innovative approaches (SEPA)

**Importance:** High

**Priority:** Intermediate

OPTION B.





HOLLAND PARK

**Description:** Property improvements to expand areas for non-motorized uses, waterfront park and landscaping, and environmental restoration.

**Justification:** Strong demand for boating infrastructure, valuable city asset with limited present use, active base for non-motorized uses, synergies with city marina and west lake, resident’s request for trailer traffic reduction, etc.

**Works:** Multiple Related Improvements:

- Expansion space for various non-motorized uses
- Trailer boat parking
- Shoreline improvements with habitat restoration

**Related Works:** Upland public access, waterfront park / landscaping.

**Management:** Motorized boating operation regulations and control through parks and recreation department.

**Cost / funding:** Intermediate cost. FIND and Broward Co. Improvement funding available for boating infrastructure.

**City Decision-Making Control:** High (permitting and construction on city-owned properties).

**Complexity:** Intermediate (close coordination with residents and existing clubs, minimize boat trailer traffic, balance motorized and non-motorized uses, discourage tourist traffic).

**Importance:** High

**Priority:** Intermediate





ICW COVES

**Description:** Transient dockage and / or mooring field in the coves north and south sides of Sheridan St. On the east side of the ICW. Removal and replacement of invasive species with native planting.

**Justification:** Strong demand for boating infrastructure, connectivity ICW-beach.

**Works:** Dockage / managed mooring field; day use docks

**Related works:** Coordinate access, etc.

**Management:** Coordination with Broward Co., Potentially managed through the city marina

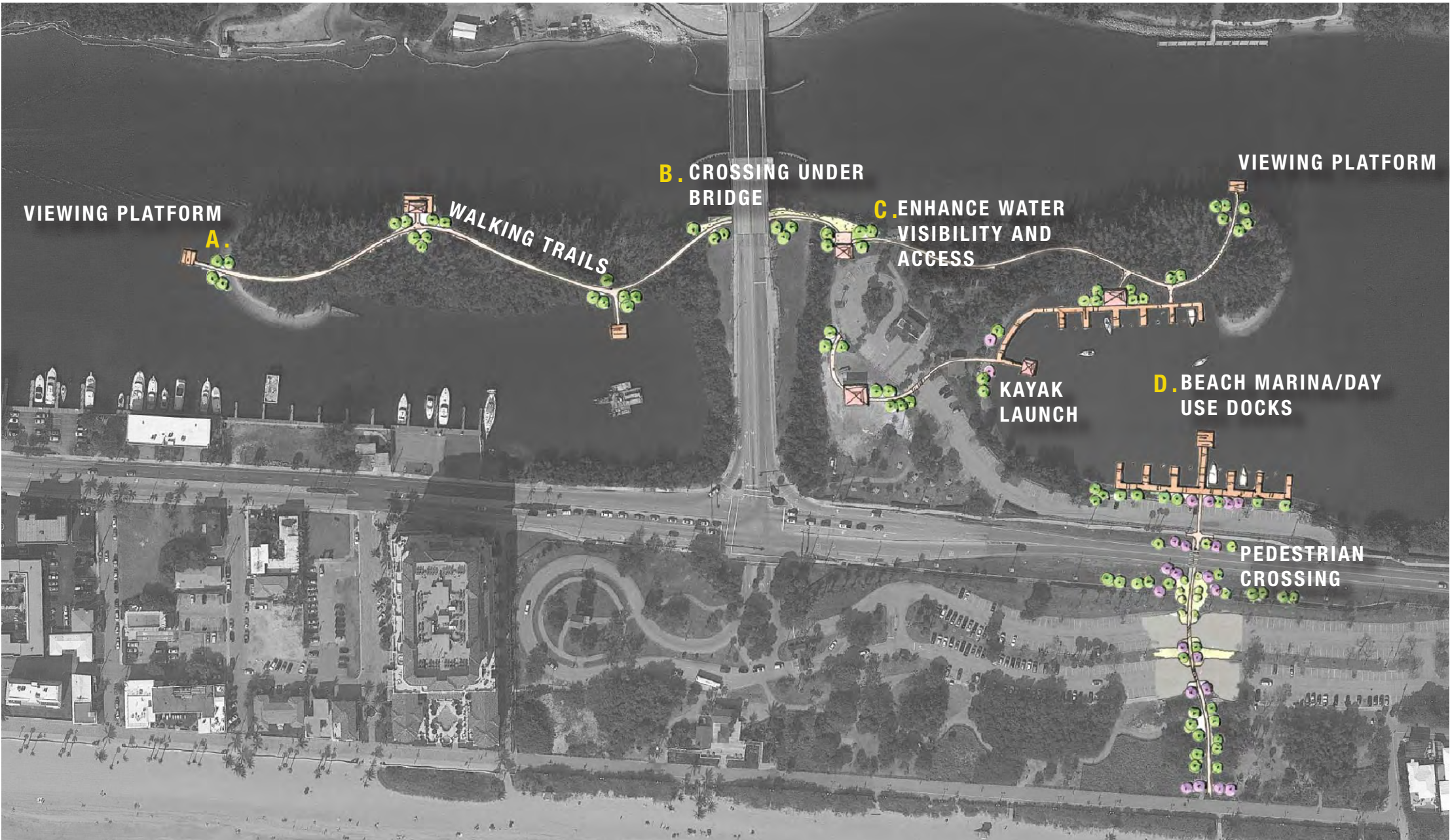
**Cost / Funding:** intermediate cost. FIND and Broward Co. Improvement funding available for boating infrastructure. Work with FDOT, County, and City to establish equitable cost sharing.

**City Decision-Making Control:** Intermediate (requires coordination with county).

**Complexity:** Intermediate (requires coordination with county) and seagrass issues.

**Importance:** Intermediate

**Priority:** Intermediate



A.



B.



C.



D.





LINEAR PARK- EAST SIDE OF ICW

**Description:** Create continuous pedestrian/bike public access along east side of ICW north and south of Hollywood Blvd.

**Justification:** Portions of ICW frontage are not visible or accessible by the public in a primary view corridor.

**Works:** Reconfiguration of parking areas under bridge ramps to create water front walking paths; enhanced walking paths south of Hollywood Blvd; pursuit of water front promenade adjacent to private property to the north.

**Related Works:** Short term- secure and screen beach maintenance equipment; long term- relocate. Project displaces small parking areas in favor of pedestrian space.

**Management:** City engineering, public works

**Cost / Funding:** Low to intermediate cost. As this concept increases public access to the water it may be eligible for FIND grant.

**City Decision-Making Control:** Low to medium

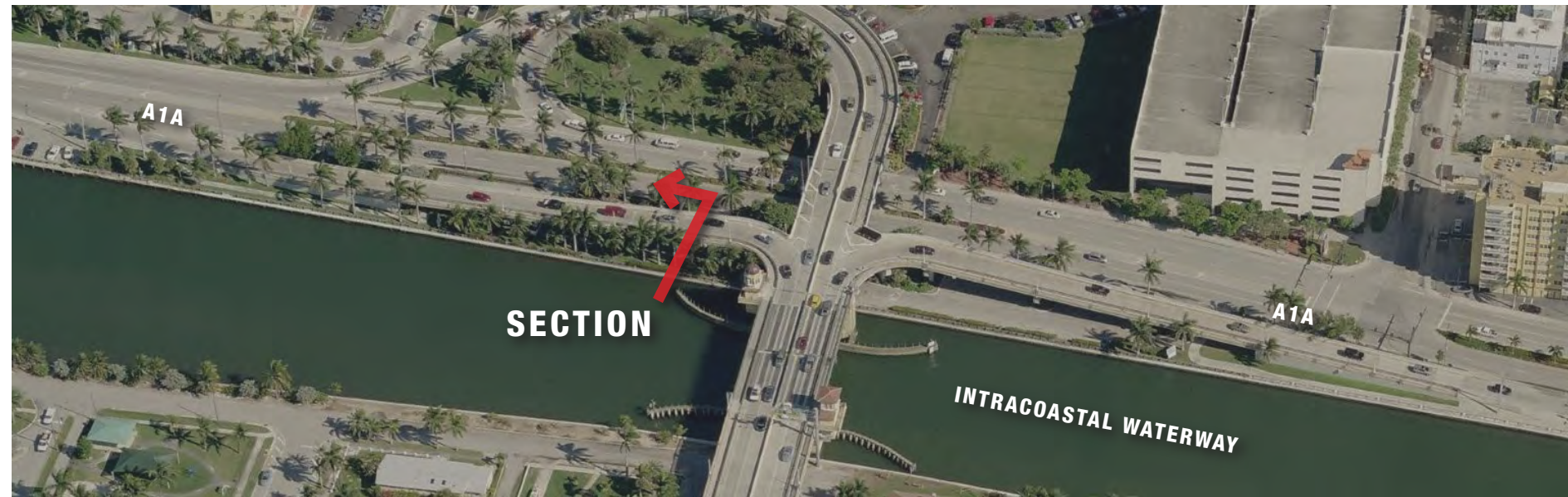
**Complexity:** Low to media

**Importance:** High- physical improvements are not a difficult undertaking.

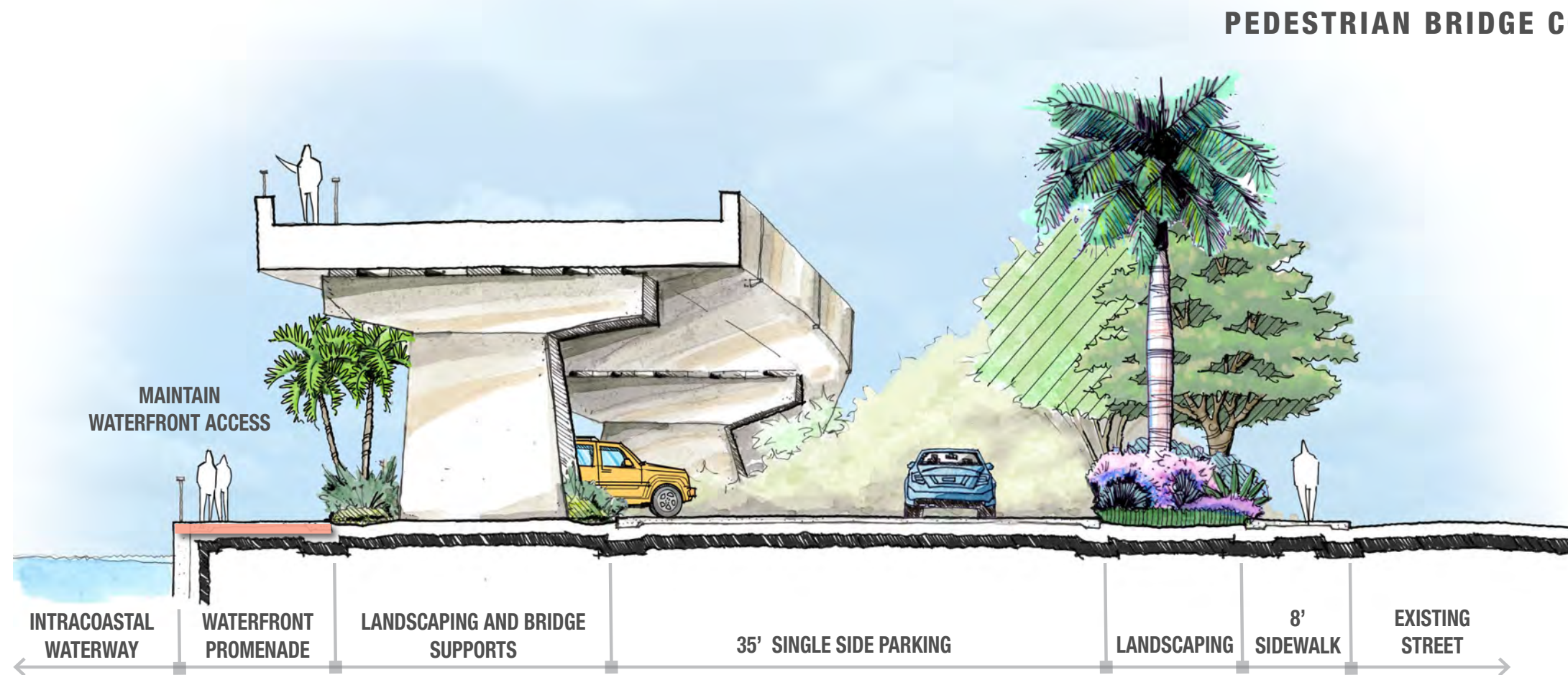
**Priority:** High







**SITE LOCATION**



**PEDESTRIAN BRIDGE CONNECTION**

SCALE 1 : 10





# BROADWALK/A1A PEDESTRIAN CONNECTOR AND HARRY BERRY PARK

**Description:** Expanded pedestrian promenade on the south side of Azalea Terrace between the Broadwalk and A1A. Replace parallel parking spaces with landscape, walkway, and lighting

**Justification:** Creation of this link will promote the formation of a pedestrian circulation loop incorporating the broadwalk and A1A from Harry Berry park to Margaritaville.

**Works:** Construction of desired elements in the existing right of way.

**Related Works:** A1A reconfiguration study would incorporate this project and connect in an optimum way.

**Management:** City engineering, parks and recreation.

**Cost / funding:** Low to intermediate

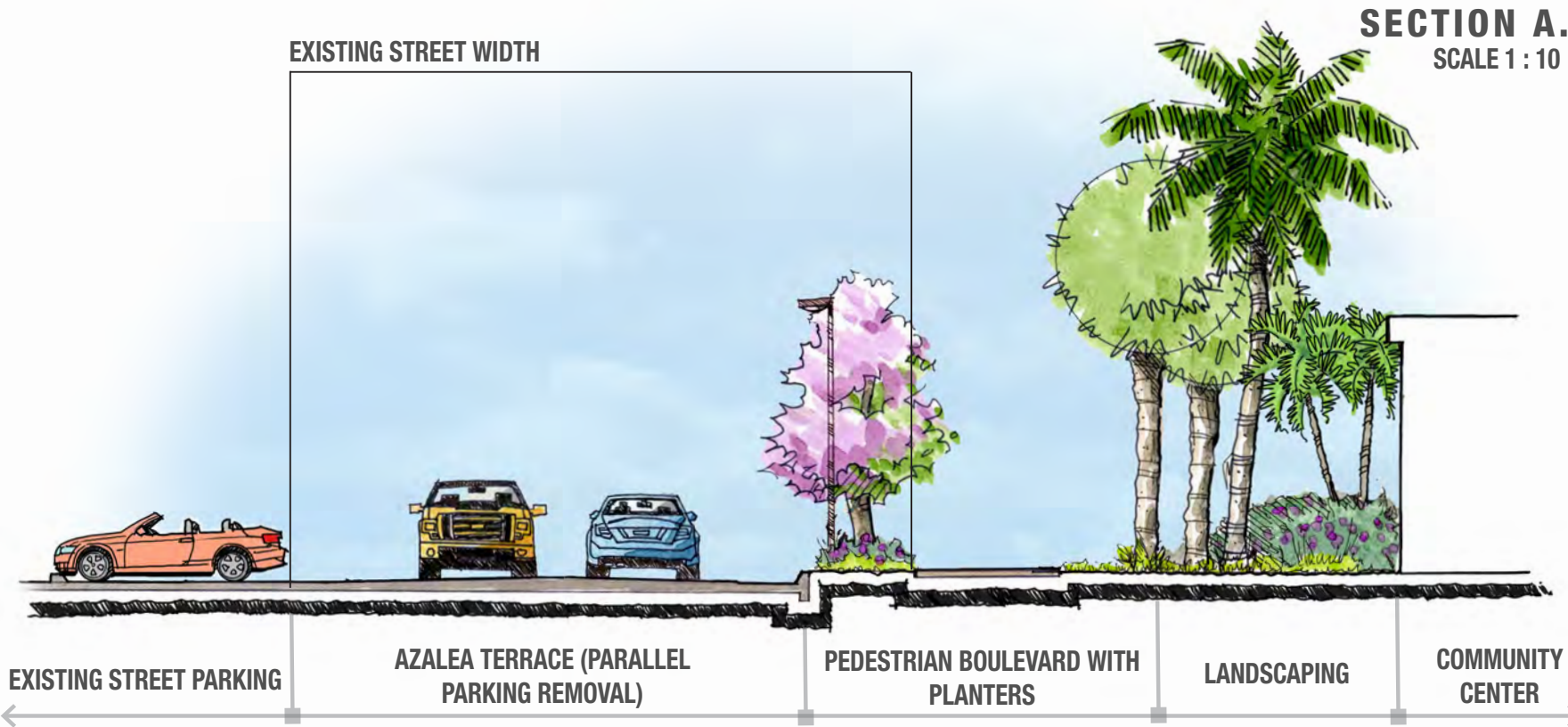
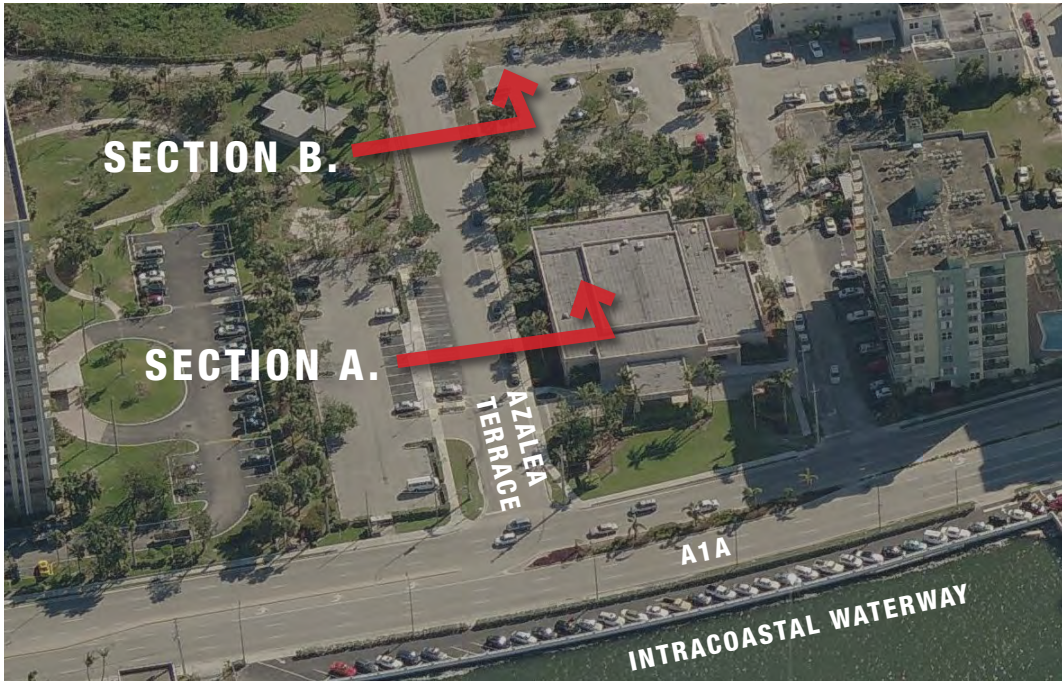
**City decision-making control:** High

**Complexity:** Low

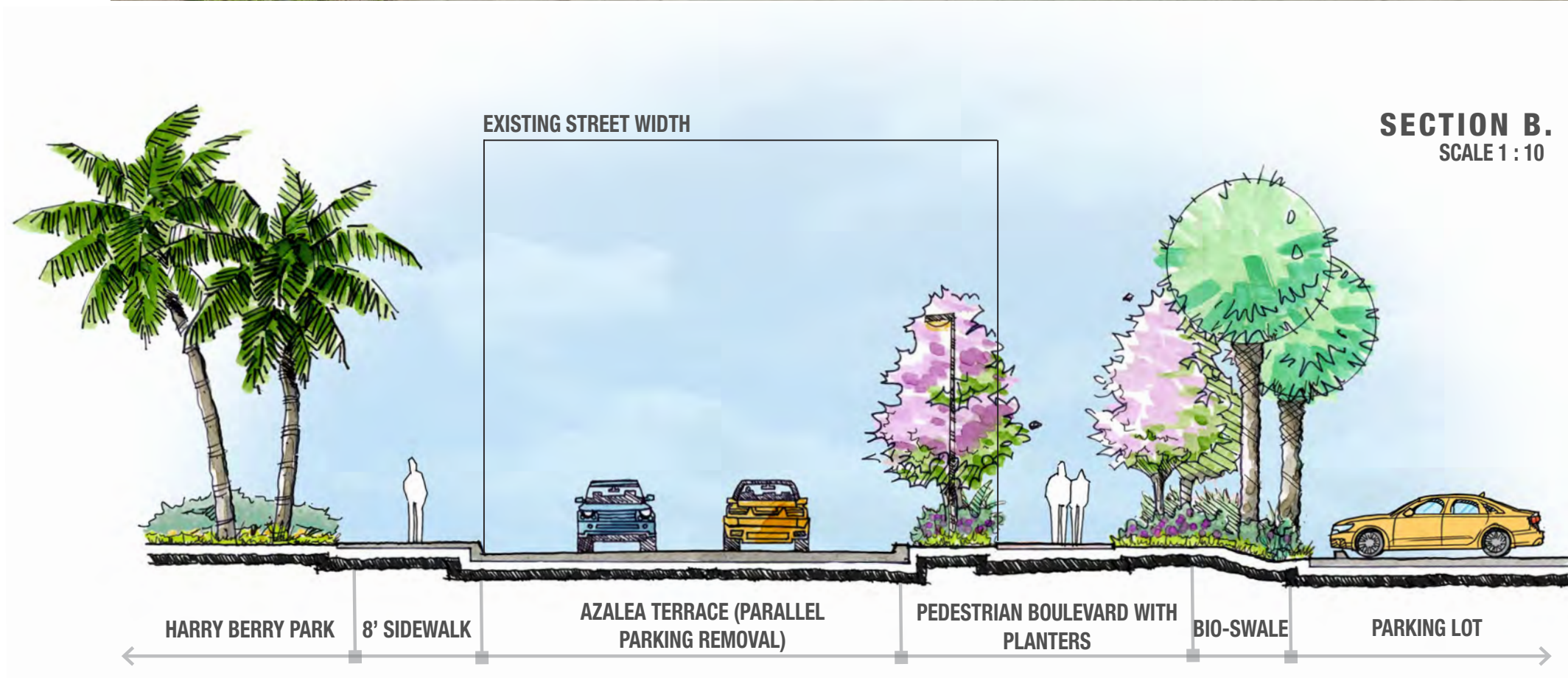
**Importance:** High

**Priority:** High

SITE LOCATION









ICW DAY USE DOCKS (COUNTY BEACH PARK)

**Description:** Consider reconfiguring the County-owned boardwalks along the east (beach) side of the ICW (Hollywood North Beach Park) to allow connection between ICW and beach by means of dockage for day use, drop-off, water taxi stops, etc.

**Justification:** Connectivity and revitalization

**Works:** Retrofit side-tie dockage without utilities (day use dockage) along the shoreline.

**Related Works:** Upland public access, pedestrian crosswalks, landscaping, etc. Reassessment of wake zones along ICW.

**Management:** Operation regulations and control in coordination with county

**Cost / Funding:** Relatively low cost. FIND and Broward Co. Improvement funding available.

**City decision-making control:** Low (coordination with county)

**Complexity:** Intermediate (coordination with county)

**Importance:** Intermediate

**Priority:** Intermediate





PUMP STATIONS

**DESCRIPTION:** Day docking along the East side of the ICW at City owned property.

**JUSTIFICATION:** Connectivity and revitalization

**WORKS:** Day docking, upland improvements including vegetation and hardscape.

**RELATED WORKS:** Crosswalks

**MANAGEMENT:** Motorized boating operation regulations and control through parks and recreation department.

**COST / FUNDING:** Intermediate to high cost.

**CITY DECISION-MAKING CONTROL:** High

**COMPLEXITY:** Intermediate (FDOT permitting for crosswalks)

**IMPORTANCE:** Intermediate

**PRIORITY:** Intermediate



G. DAY DOCKING AND BEACH CONNECTIVITY

05.14.2014



## ACCESS TO NATURAL AMENITIES

**DESCRIPTION:** Capitalize on natural amenities and recreational opportunities such as kayaking and paddle boarding. Focus on eco tourism.

**JUSTIFICATION:** Provides educational opportunities as the largest remaining mangrove ecosystem in the urban coastal zone from Miami to West Palm Beach.

**WORKS:** Increase pedestrian access with trails and crosswalks.

**RELATED WORKS:** Potential water taxi accessibility

**MANAGEMENT:** Operation regulations and control in coordination with county

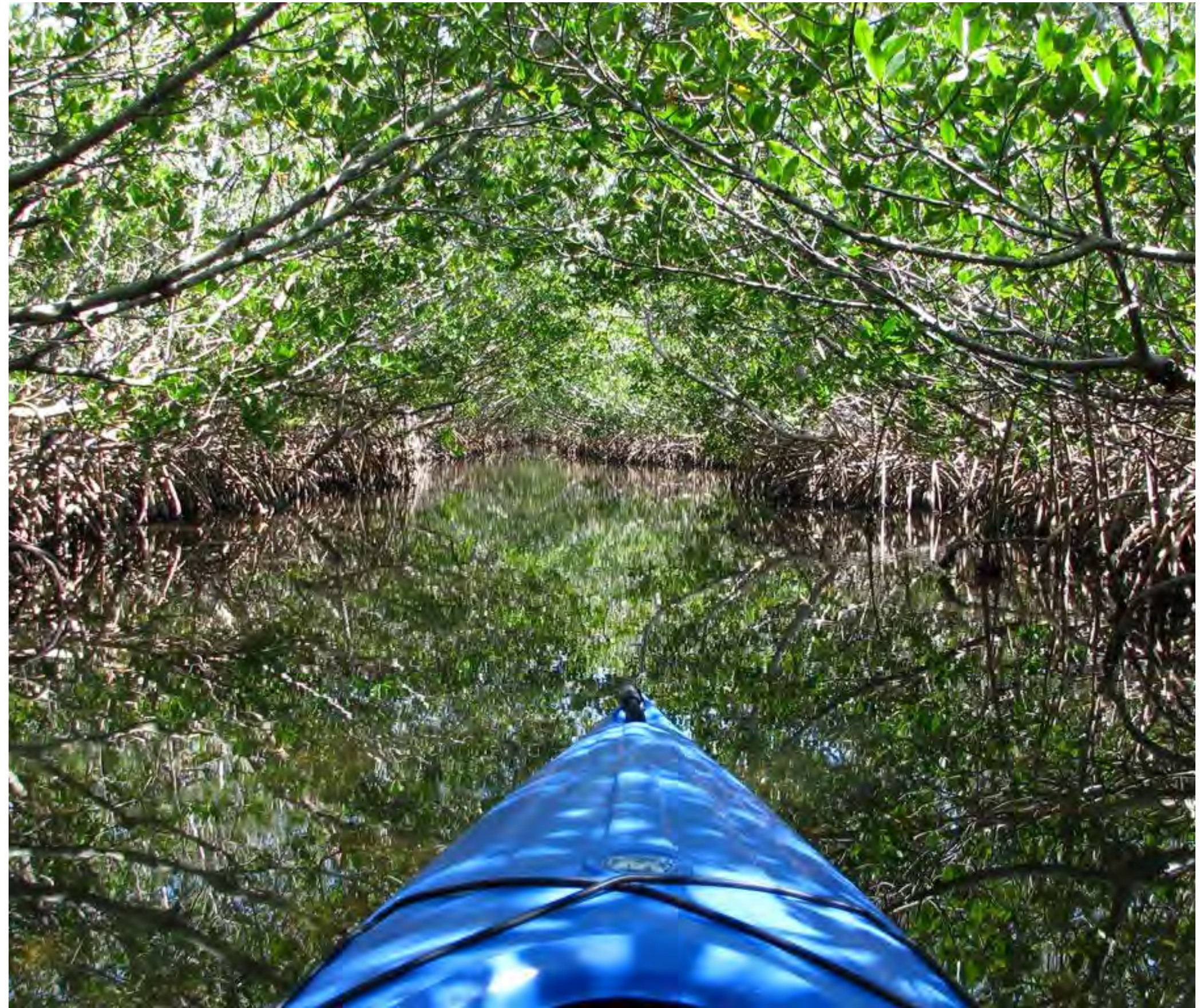
**COST / FUNDING:** Low

**CITY DECISION-MAKING CONTROL:** Low (coordination with county)

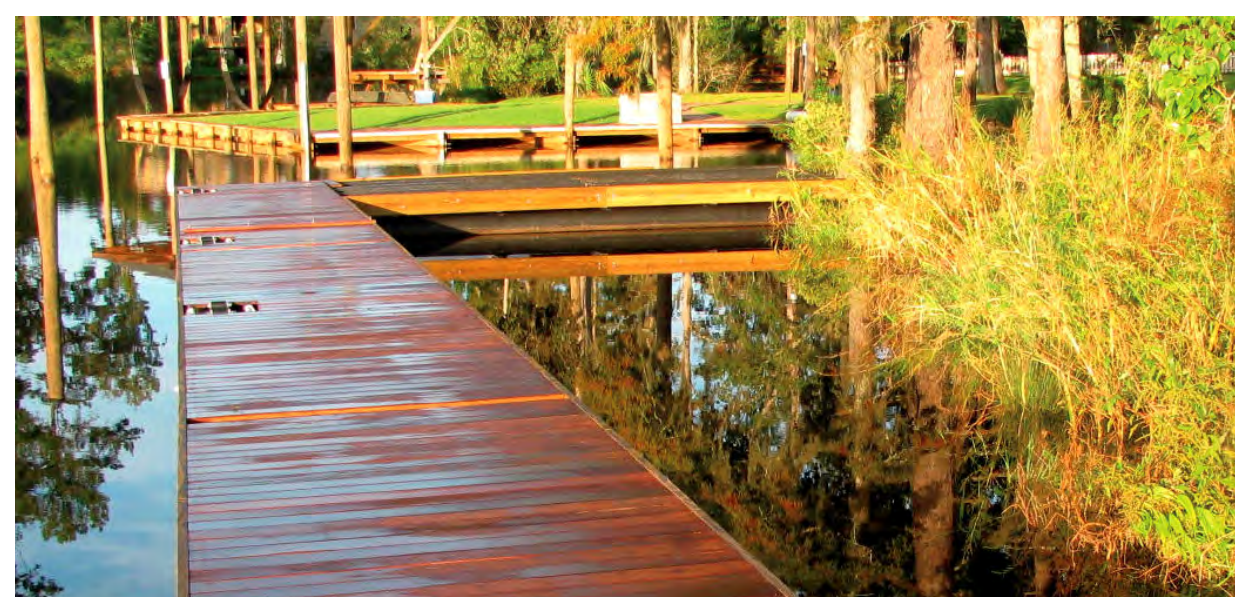
**COMPLEXITY:** Low

**IMPORTANCE:** Low

**PRIORITY:** Low







## ROTARY PARK

**Description:** Improvements to the boat ramp and day use dockage at rotary park should be addressed. Parking for trailers needs improvement. Evaluate the potential for day use docks adjacent to the boat ramp. Improvements should also be made to allow better views of the water.

**Justification:** Access and revitalization

**Works:** Retrofit boat ramp to include stable dockage without utilities (day use dockage) along the shoreline, vegetation removal/trimming

**Related Works:** Upland public access, waterfront park, landscaping, etc.

**Management:** Operation regulations and control, City of Hollywood

**Cost / Funding:** Relatively low cost. FIND and Broward Co. Improvement funding available.

**City Decision-Making Control:** High (permitting and construction on City-owned properties).

**Complexity:** Intermediate

**Importance:** Intermediate

**Priority:** Low







## QUESTIONS AND COMMENTS?

05.14.2014

